

ā



Ādisōke

Municipal Engineering Association
2024 Conference

November 21, 2024

ādisōke

Introductions

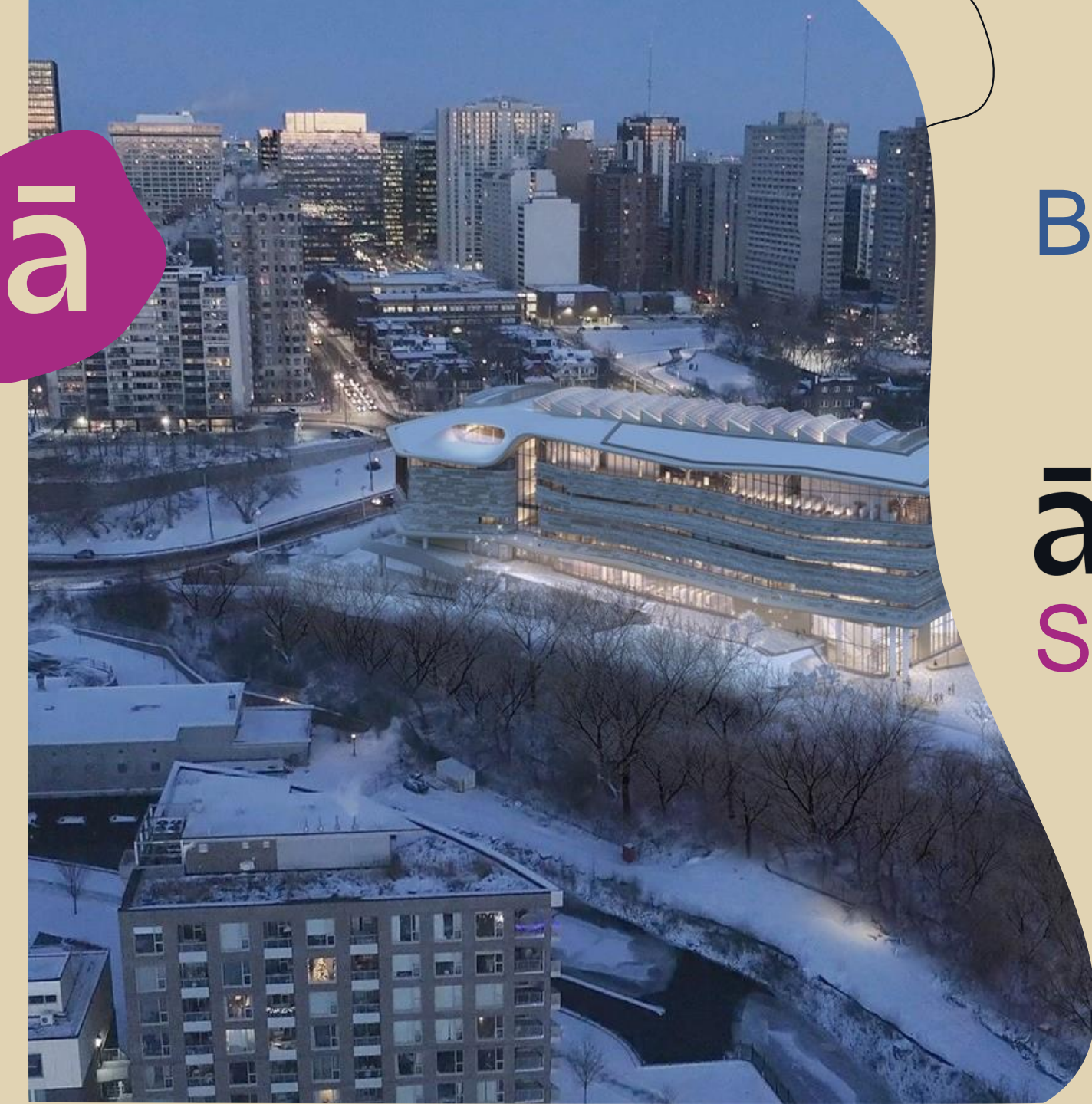


Paul Hussar
City of Ottawa



David Baird
City of Ottawa





Background

ādisōke
Stories Live Here

Anishinābe Algonquin Partnerships



Stories live here



Les récits prennent vie ici



Àdisòkàn ondaje abimagadòn

Public Engagement

- 7,000 people consulted
- 10 in-person workshops
- 3,000 online participants
- Pop-up consultation and engagement events across city



Stories live here



Les récits prennent vie ici



Àdisòkàn ondaje abimagadòn

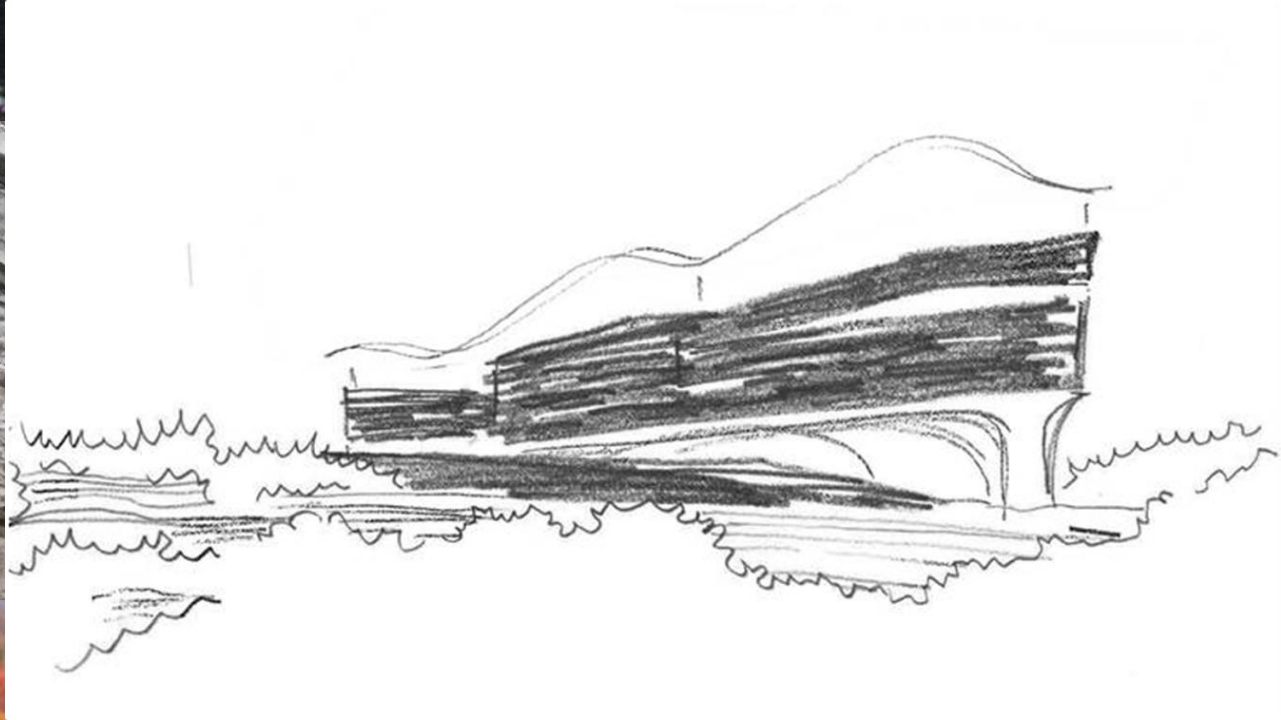
water

Design

stone

inspiration

wood



Final Design



Unique Programming Opportunities



Adjacent Developments



DREAM LeBreton



East Flats
Claridge Development



900 Albert



ZIBI



Stories live here



Les récits prennent vie ici



Àdisòkàn ondaje abimagadòn

Adjacent Infrastructure

- Ottawa Light Rail Transit
- Combined Sewage Storage Tunnel
- High-pressure water main



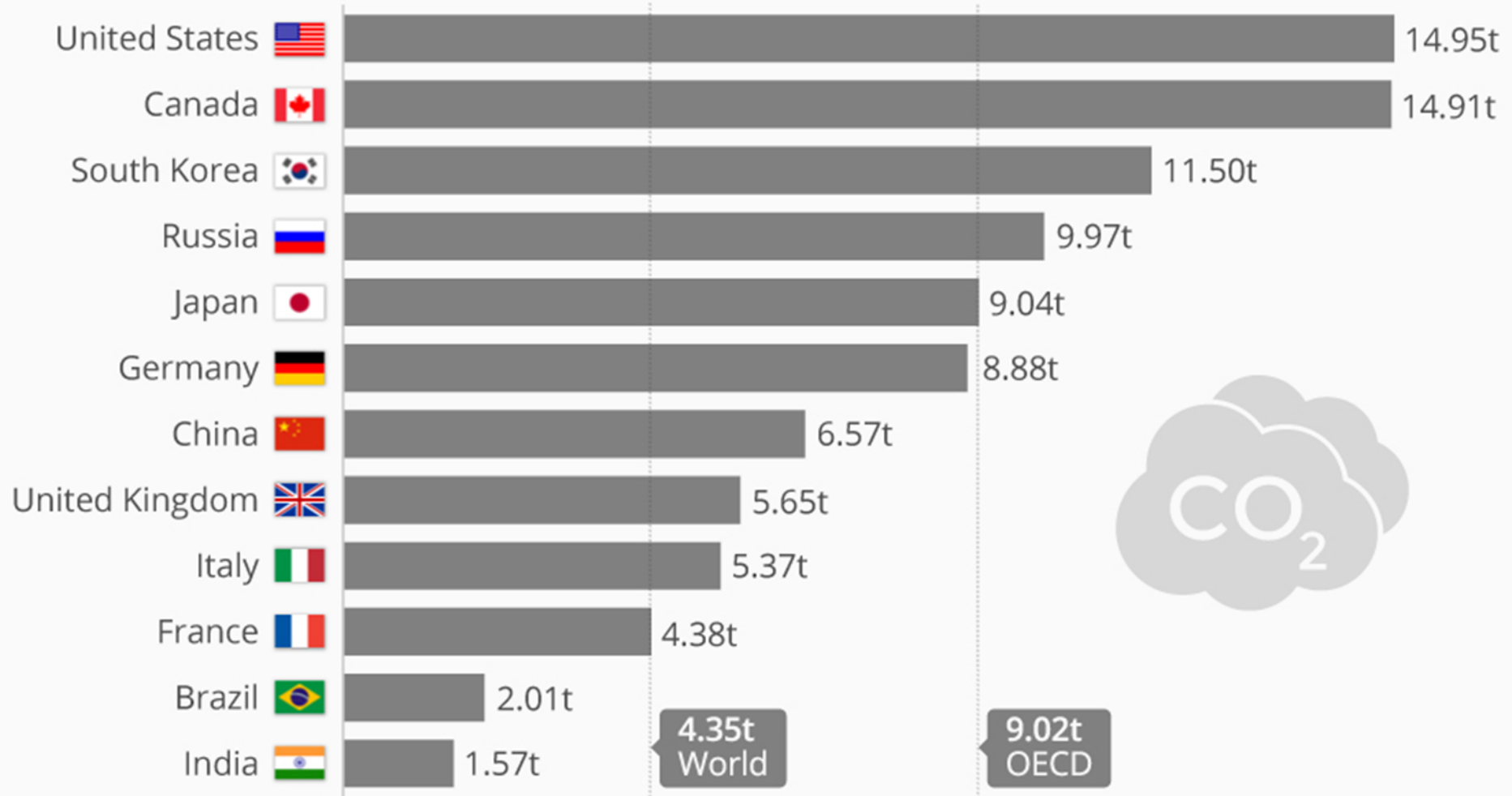
Drilled caissons bridging CSST

Sustainability Features



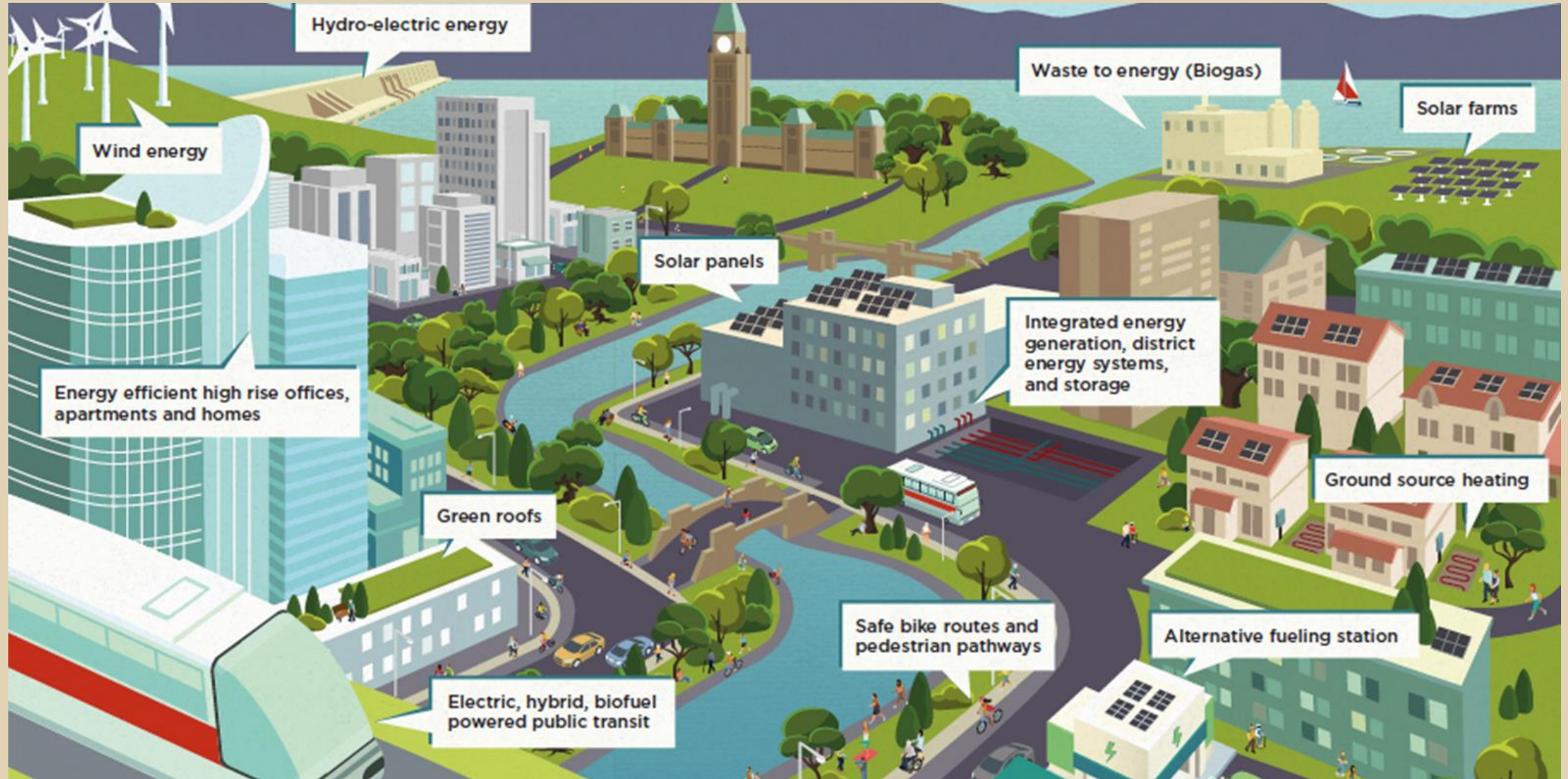
The Global Disparity in Carbon Footprints

Per capita CO₂ emissions in the world's largest economies in 2016* (in metric tons)



What can we do?

Build better Cities, including better Buildings



SUSTAINABILITY INITIATIVES

1. Mass timber roof structure in lieu of steel framing
2. Daylight- increased daylight in atrium
3. Enhanced energy efficient lighting
4. Advanced commissioning
5. Air scrubbing
6. Green wall
7. Improved indoor air quality monitoring
8. Improve filtration
9. LAC temperature & humidity set points
10. Enhance energy metering
11. Concrete reduction specification:
 - Library loading rationalization
 - 20% using Green Concrete
12. Central Gathering Space in-floor heating



SUSTAINABILITY INITIATIVES

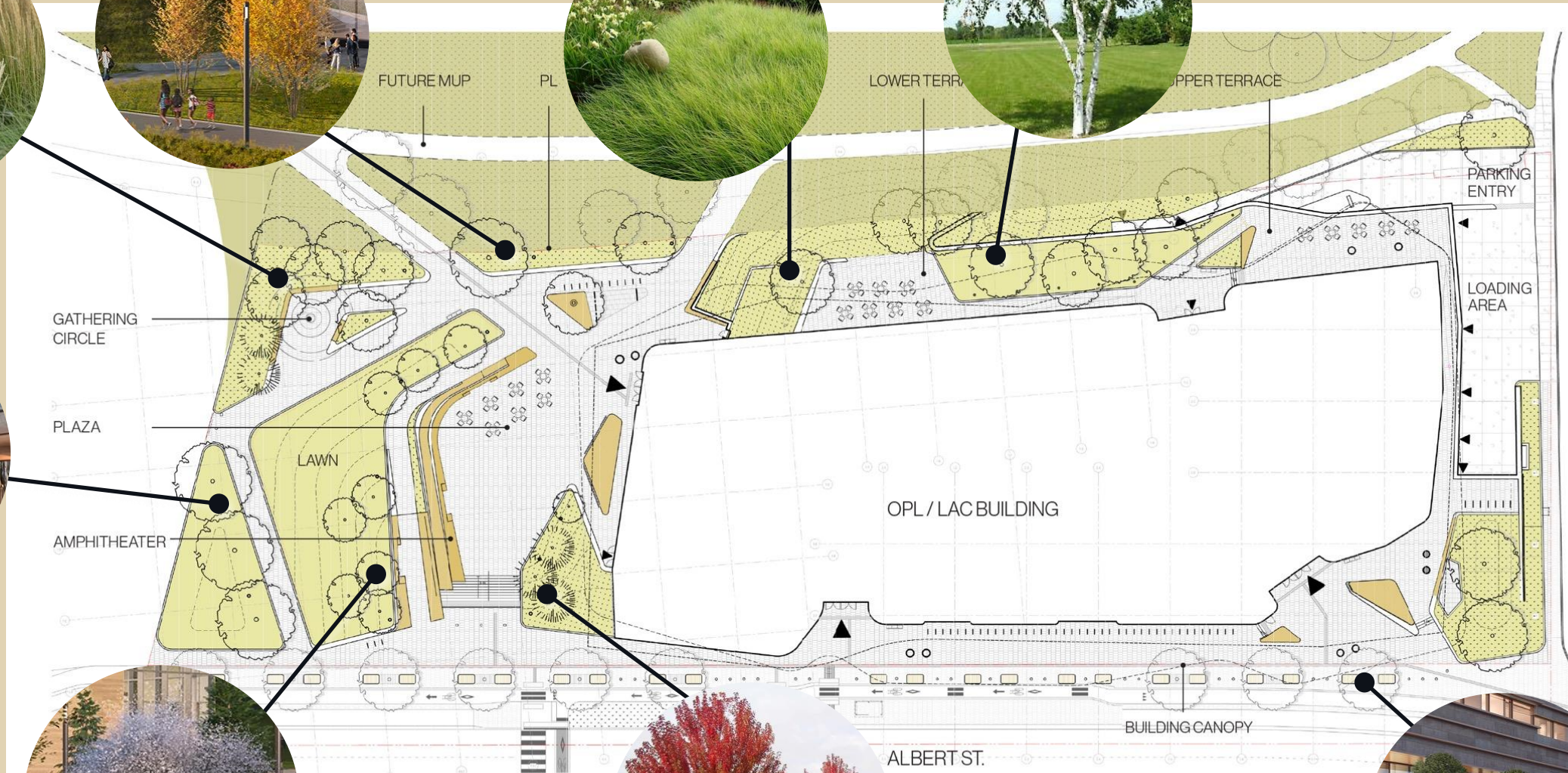
1. Rooftop photovoltaic panels
2. Roof thermal resistance value
3. Improved glazing performance – triple glazing
4. Reduced infiltration
5. Landscape planting terrace
6. Building integrate photovoltaic panels
7. Use of natural material – interior spaces of reclaimed wood
8. Exterior fins for solar shade control
9. Wall & soffits thermal resistance value
10. Wood soffit in lieu of metal panel soffit
11. Extended foundation insulation
12. Parking garage charging
13. Landscape elements



North Berm



Terrace Lawn



Back of Amphitheatre



Street Trees



Albert Entrance







Construction Update

ādisōke





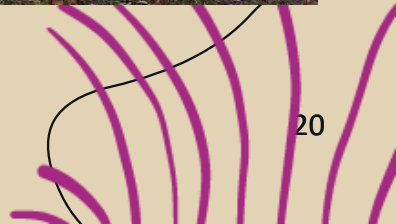
Stories live here



Les récits prennent vie ici



Àdisòkàn ondaje abimagadòn





Stories live here




Les récits prennent vie ici




Àdisòkàn ondaje abimagadòn



Stories live here

 Les récits prennent vie ici

 Àdisòkàn ondaje abimagadòn







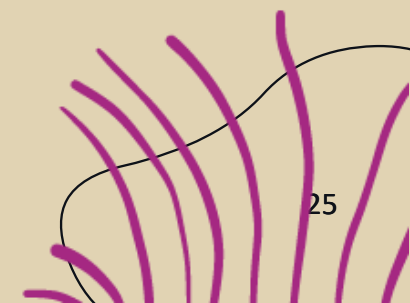
Stories live here

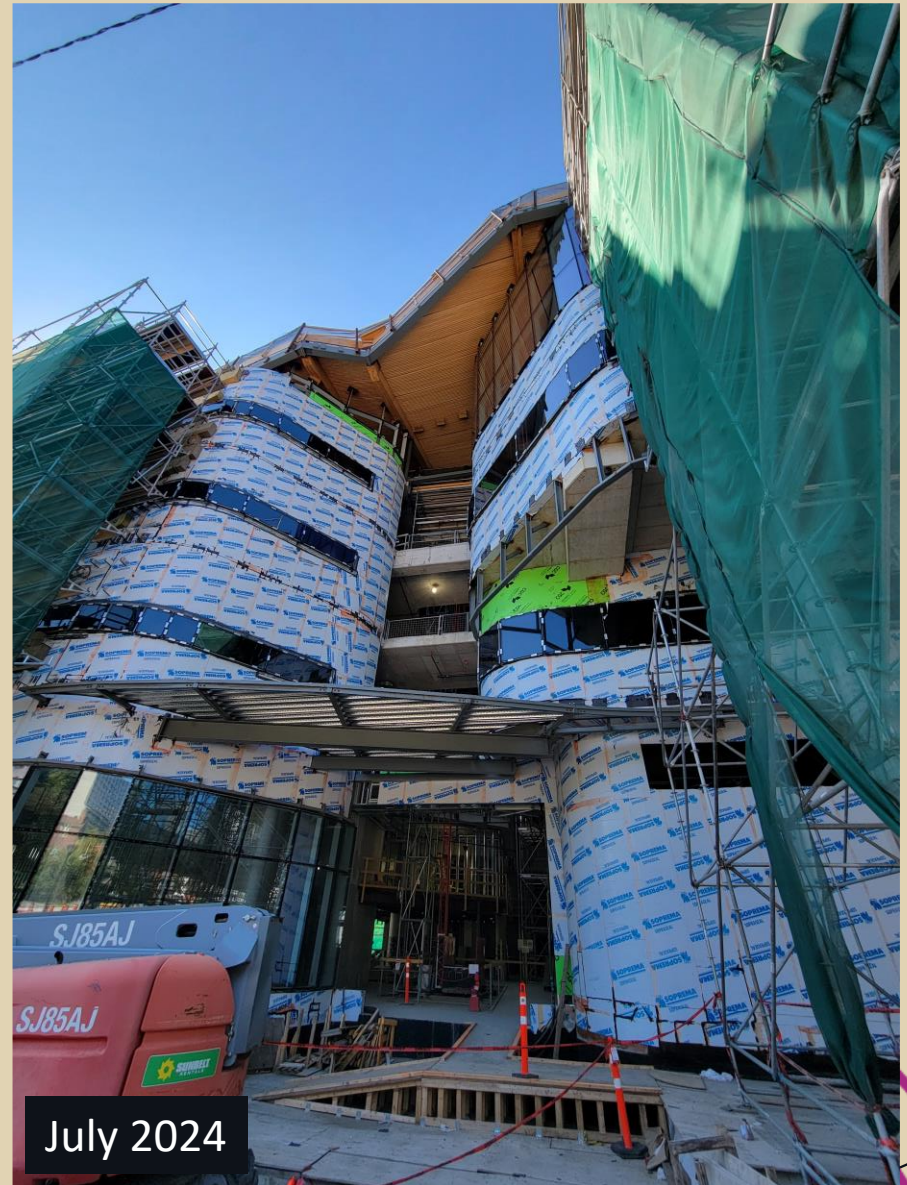


Les récits prennent vie ici





Àdisòkàn ondaje abimagadòn





Stories live here

 Les récits prennent vie ici

 Àdisòkàn ondaje abimagadòn



Stories live here



Les récits prennent vie ici



Àdisòkàn ondaje abimagadòn



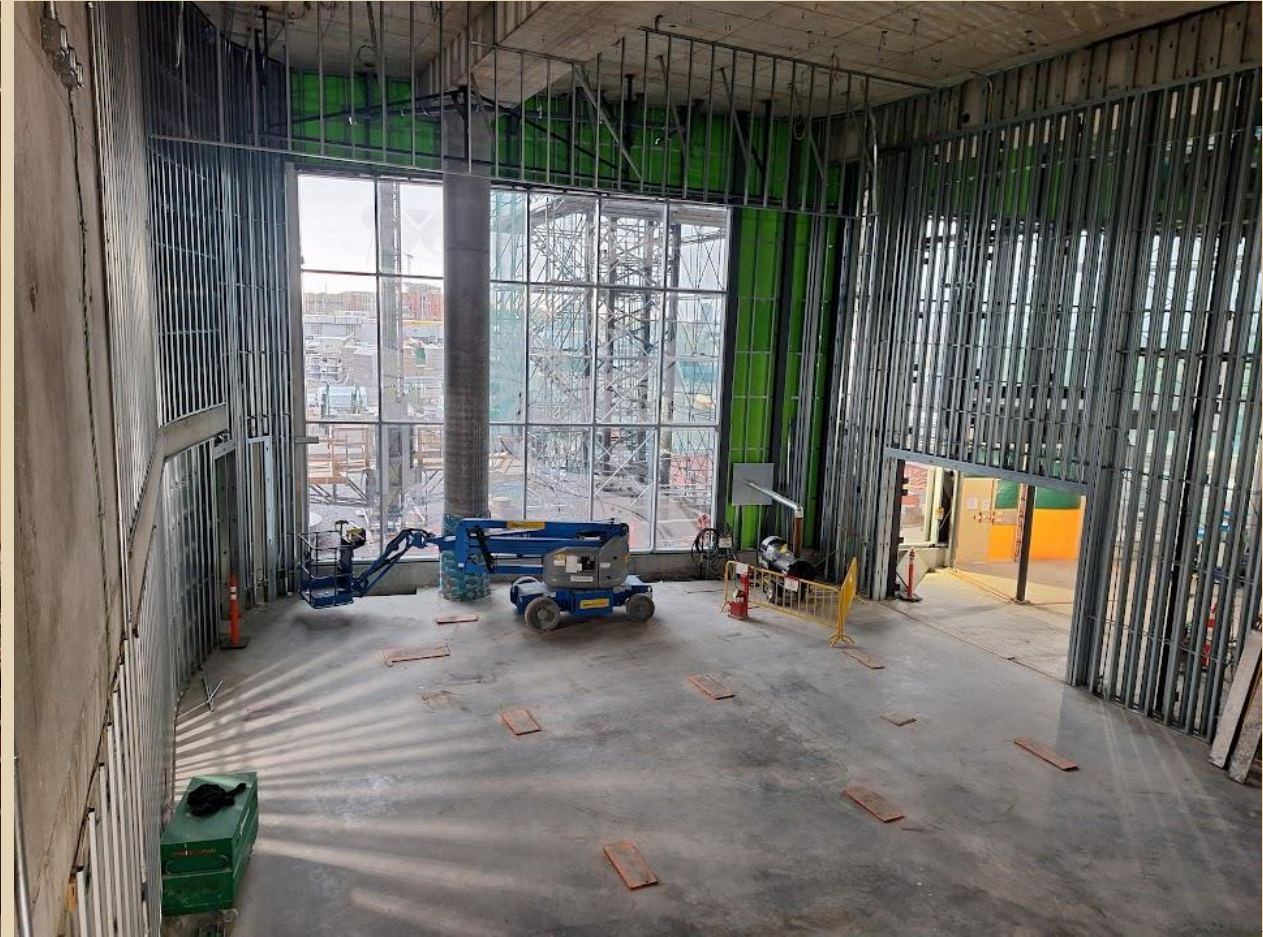
Stories live here



Les récits prennent vie ici



Àdisòkàn ondaje abimagadòn



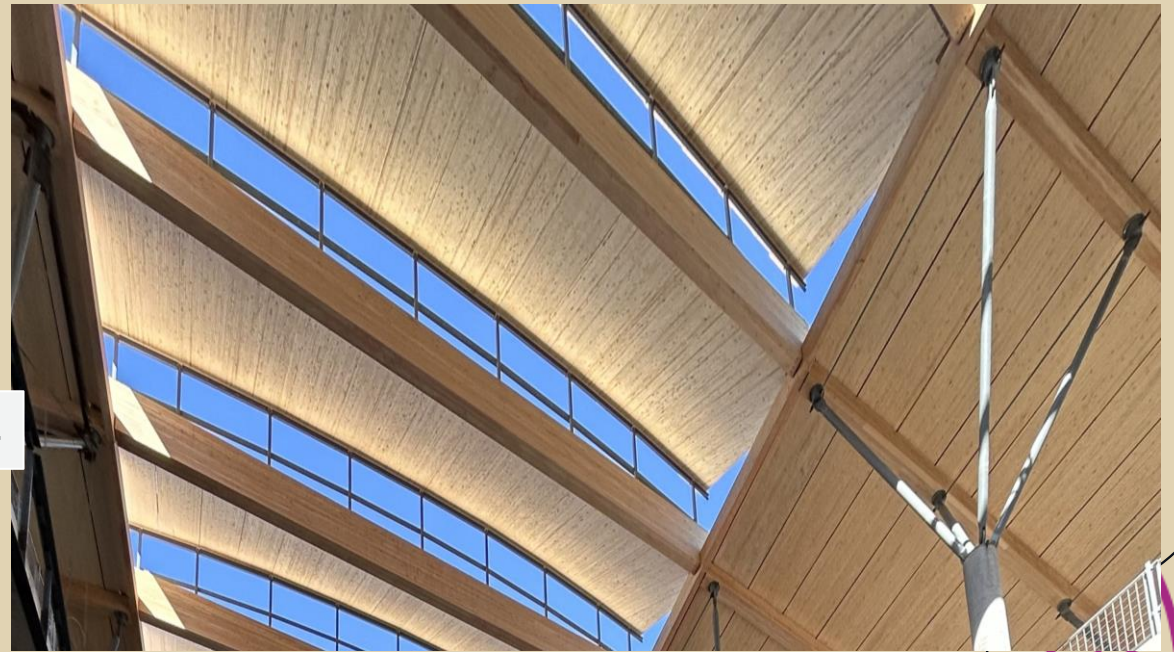
Stories live here



Les récits prennent vie ici



Àdisòkàn ondaje abimagadòn



July 2024



Stories live here



Les récits prennent vie ici



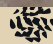
Àdisòkàn ondaje abimagadòn




November 2024




Stories live here


 Les récits prennent vie ici

 Àdisòkàn ondaje abimagadòn



Stories live here

 Les récits prennent vie ici

 Àdisòkàn ondaje abimagadòn



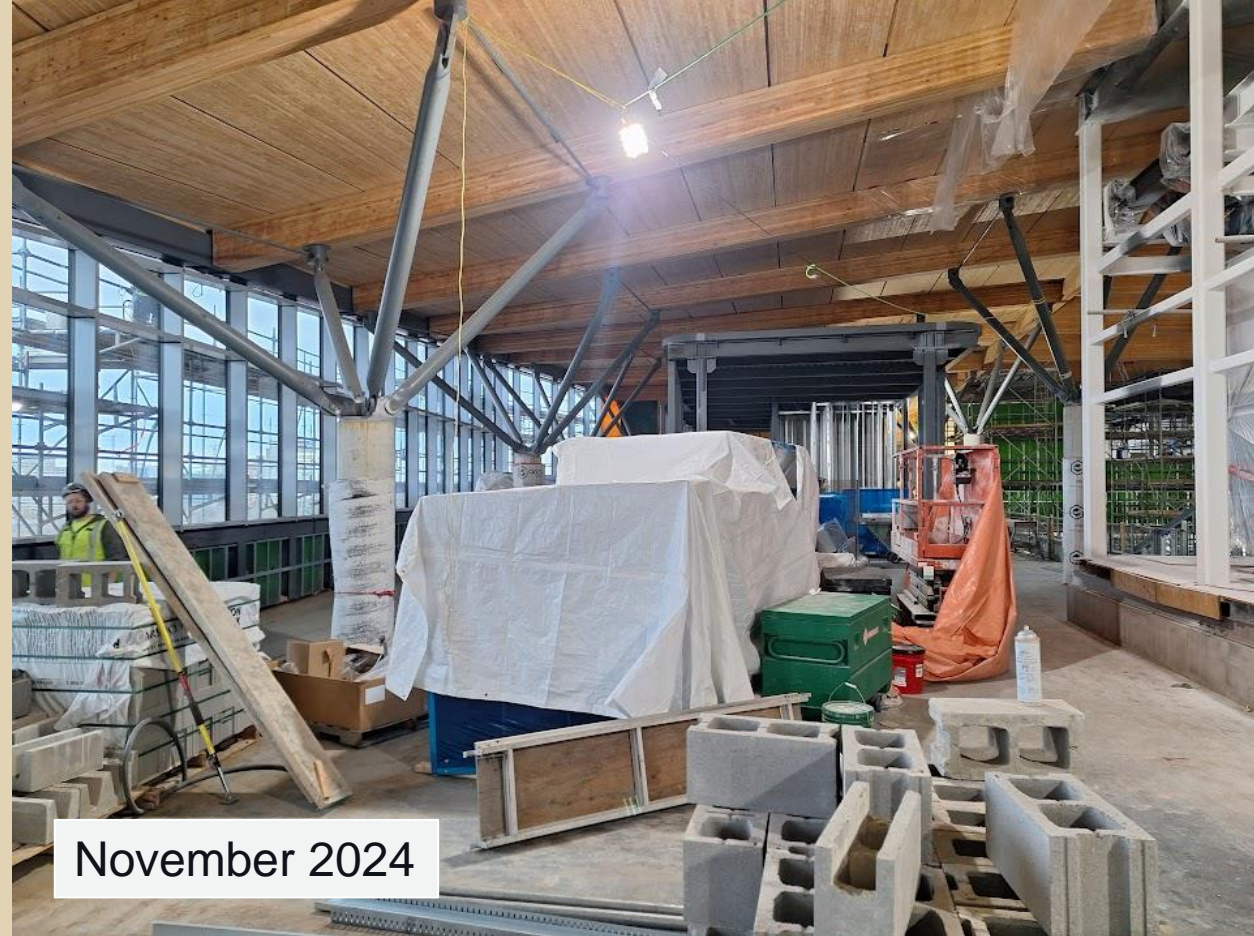
Stories live here



Les récits prennent vie ici



Àdisòkàn ondaje abimagadòn



Stories live here



Les récits prennent vie ici



Àdisòkàn ondaje abimagadòn



Stories live here



Les récits prennent vie ici



Àdisòkàn ondaje abimagadòn

Thank you!
Migwech.

ādisōke



Stories live here



Les récits prennent vie ici



Àdisòkàn ondaje abìmagadòn